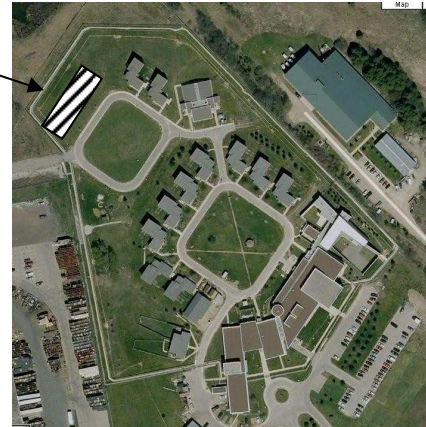




Grand Valley Institution for Women



Site Location



Region: Southwestern Ontario

Location: Kitchener

Owner/Client: Correctional Services Canada

Architect: Malhotra Nicholson Sheffield Architects Inc

Type of Project: Project Management

Three 2,698 ft² transitional dwelling units (units 14 to 16) were constructed on unstable bearing using a reinforced concrete foundation supported on helical piles. Site service upgrades to power, fibre optics, water, and sewers were required. A modification to the perimeter security system was done to facilitate working within the facility compound. The construction team adhered to rigorous security requirements to support continued 24/7 operations of this occupied high security facility.

